

5 KNIT + PURL PATTERNS

FREE Sampler Digital E-Book

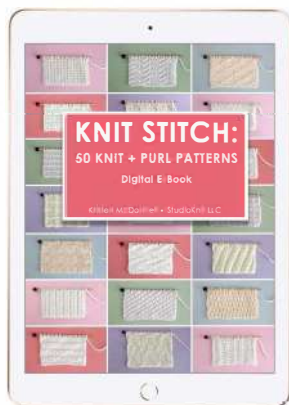


Kristen McDonnell • StudioKnit LLC



Hello, Knitting Friend!

Thank you for subscribing to my Studio Knit email list. Enjoy this free digital Sampler featuring 5 of the 50 easy textures from my Knit Stitch Pattern Book. I hope it inspires to you to knit up something new.



Get Print and Digital E-Books in my Studio Knit Shop!

Created by Kristen McDonnell
production • knitting • photography
art direction • cover design • layout • text

© StudioKnit LLC
www.StudioKnitSF.com

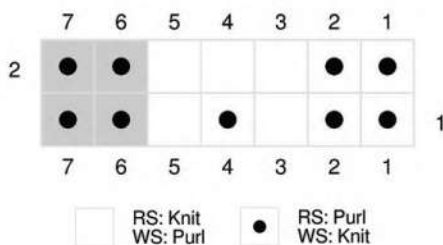
All rights reserved. This book is sold subject to the condition that it may not be reproduced, stored in a retrieval system or transmitted in any form or by any means, electronic, mechanical, photocopying, recording or otherwise without the creator's prior consent.



BEADED RIB

CAST ON

Multiple of 5, plus 2 (flat)
Multiple of 5 (in the round)



FLAT

Row 1: * P2, K1, P1,
K1 *, P2

Row 2: K2, * P3, K2 *

IN THE ROUND

Row 1: * P2, K1, P1,
K1 *

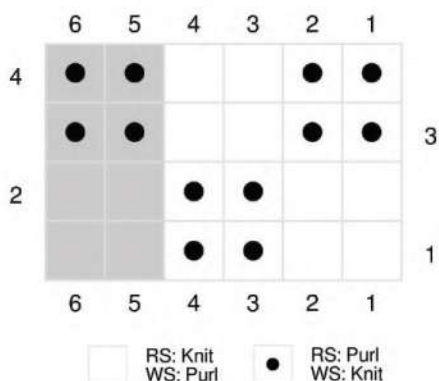
Row 2: * P2, K3 *



DOUBLE MOSS

CAST ON

Multiple of 4, plus 2 (flat)
Multiple of 4 (in the round)



FLAT

Row 1: * K2, P2 *, K2

Row 2: P2, * K2, P2 *

Row 3: * P2, K2 *, P2

Row 4: K2, * P2, K2 *

IN THE ROUND

Row 1: * K2, P2 *

Row 2: * K2, P2 *

Row 3: * P2, K2 *

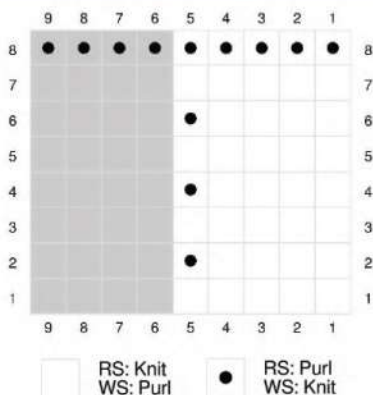
Row 4: * P2, K2 *



TILE SQUARES

CAST ON

Multiple of 5, plus 4 (flat)
Multiple of 5 (in the round)



FLAT

Row 1: Knit All
Row 2: P4, * K1, P4 *
Row 3: Knit All
Row 4: P4, * K1, P4 *
Row 5: Knit All
Row 6: P4, * K1, P4 *
Row 7: Knit All
Row 8: Knit All

IN THE ROUND

Row 1: Knit All
Row 2: * K4, P1 *
Row 3: Knit All
Row 4: * K4, P1 *
Row 5: Knit All
Row 6: * K4, P1 *
Row 7: Knit All
Row 8: Purl All

DIAGONAL ZIGZAG

CAST ON

Multiples of 8

FLAT

Row 1: * K1, P1, K1, P5 *
Row 2: * K5, P1, K1, P1 *
Row 3: * K1, P1, K5, P1 *
Row 4: * K1, P5, K1, P1 *
Row 5: * K1, P5, K1, P1 *
Row 6: * K1, P1, K5, P1 *
Row 7: * K5, P1, K1, P1 *
Row 8: * K1, P1, K1, P5 *
Row 9: * P4, K1, P1,
K1, P1 *
Row 10: * K1, P1, K1,
P1, K4 *
Row 11: * K3, P1, K1,
P1, K2 *
Row 12: * P2, K1, P1,
K1, P3 *
Row 13: * P2, K1, P1,
K1, P3 *
Row 14: * K3, P1, K1,
P1, K2 *
Row 15: * K1, P1, K1,
P1, K4 *
Row 16: * P4, K1, P1,
K1, P1 *

IN THE ROUND

Row 1: * K1, P1, K1, P5 *
Row 2: * K1, P1, K1, P5 *
Row 3: * K1, P1, K5, P1 *
Row 4: * K1, P1, K5, P1 *
Row 5: * K1, P5, K1, P1 *
Row 6: * K1, P5, K1, P1 *
Row 7: * K5, P1, K1, P1 *
Row 8: * K5, P1, K1, P1 *
Row 9: * P4, K1, P1,
K1, P1 *
Row 10: * P4, K1, P1,
K1, P1 *
Row 11: * K3, P1, K1,
P1, K2 *
Row 12: * K3, P1, K1,
P1, K2 *
Row 13: * P2, K1, P1,
K1, P3 *
Row 14: * P2, K1, P1,
K1, P3 *
Row 15: * K1, P1, K1,
P1, K4 *
Row 16: * K1, P1, K1,
P1, K4 *



DIAGONAL ZIGZAG

	8	7	6	5	4	3	2	1	
16					●		●		
					●		●		15
14	●	●	●		●		●	●	
	●	●	●		●		●	●	13
12			●		●				
			●		●				11
10	●		●		●	●	●	●	
	●		●		●	●	●	●	9
8	●		●						
	●		●						7
6	●		●	●	●	●	●		
	●		●	●	●	●	●		5
4	●						●		
	●						●		3
2	●	●	●	●	●		●		
	●	●	●	●	●		●		1
	8	7	6	5	4	3	2	1	

RS: Knit
 WS: Purl

● RS: Purl
 WS: Knit

LATTICE WITH SEED

CAST ON

Multiple of 14, plus 2 (flat)

Multiple of 14 (in the round)

FLAT

Row 1: * P7, K2, P5 *, P2

Row 2: K2, * K5, P2, K7 *

Row 3: Knit All

Row 4: P2, * K1, P1, K1, P1,
K1, P2 *

Row 5: * K3, P1, K1, P1, K4,
P1, K1, P1, K1 *, K2

Row 6: P2, * K1, P1, K1, P1,
K1, P2 *

Row 7: * K3, P1, K1, P1, K4,
P1, K1, P1, K1 *, K2

Row 8: P2, * K1, P1, K1, P1,
K1, P2 *

Row 9: * K3, P1, K1, P1, K4,
P1, K1, P1, K1 *, K2

Row 10: P2, * K12, P2 *

Row 11: * K2, P12 *, K2

Row 12: Purl All

Row 13: * K2, P1, K1, P1, K1,
P1 *, K2

Row 14: P2, * P1, K1, P1, K1,
P4, K1, P1, K1, P3 *

Row 15: * K2, P1, K1, P1, K1,
P1 *, K2

Row 16: P2, * P1, K1, P1, K1,
P4, K1, P1, K1, P3 *

Row 17: * K2, P1, K1, P1, K1,
P1 *, K2

Row 18: P2, * P1, K1, P1, K1,
P4, K1, P1, K1, P3 *

IN THE ROUND

Row 1: * P7, K2, P5 *

Row 2: * P7, K2, P5 *

Row 3: Knit All

Row 4: * K2, P1, K1, P1, K1,
P1 *

Row 5: * K3, P1, K1, P1, K4,
P1, K1, P1, K1 *

Row 6: * K2, P1, K1, P1, K1,
P1 *

Row 7: * K3, P1, K1, P1, K4,
P1, K1, P1, K1 *

Row 8: * K2, P1, K1, P1, K1,
P1 *

Row 9: * K3, P1, K1, P1, K4,
P1, K1, P1, K1 *

Row 10: * K2, P12 *

Row 11: * K2, P12 *

Row 12: Knit All

Row 13: * K2, P1, K1, P1,
K1, P1 *

Row 14: * K3, P1, K1, P1,
K4, P1, K1, P1, K1 *

Row 15: * K2, P1, K1, P1, K1,
P1 *

Row 16: * K3, P1, K1, P1, K4,
P1, K1, P1, K1 *

Row 17: * K2, P1, K1, P1, K1,
P1 *

Row 18: * K3, P1, K1, P1, K4,
P1, K1, P1, K1 *



LATTICE WITH SEED

	16	15	14	13	12	11	10	9	8	7	6	5	4	3	2	1
18				●		●					●		●			
17			●		●		●			●		●		●		
16				●		●					●		●			
15			●		●		●			●		●		●		
14				●		●					●		●			
13			●		●		●			●		●		●		
12																
11			●	●	●	●	●	●	●	●	●	●	●	●	●	
10			●	●	●	●	●	●	●	●	●	●	●	●	●	
9				●		●					●		●			
8			●		●		●			●		●		●		
7				●		●					●		●			
6			●		●		●			●		●		●		
5				●		●					●		●			
4			●		●		●			●		●		●		
3																
2	●	●	●	●	●	●	●			●	●	●	●	●	●	●
1	●	●	●	●	●	●	●			●	●	●	●	●	●	●
	16	15	14	13	12	11	10	9	8	7	6	5	4	3	2	1

□ RS: Knit
WS: Purl

● RS: Purl
WS: Knit